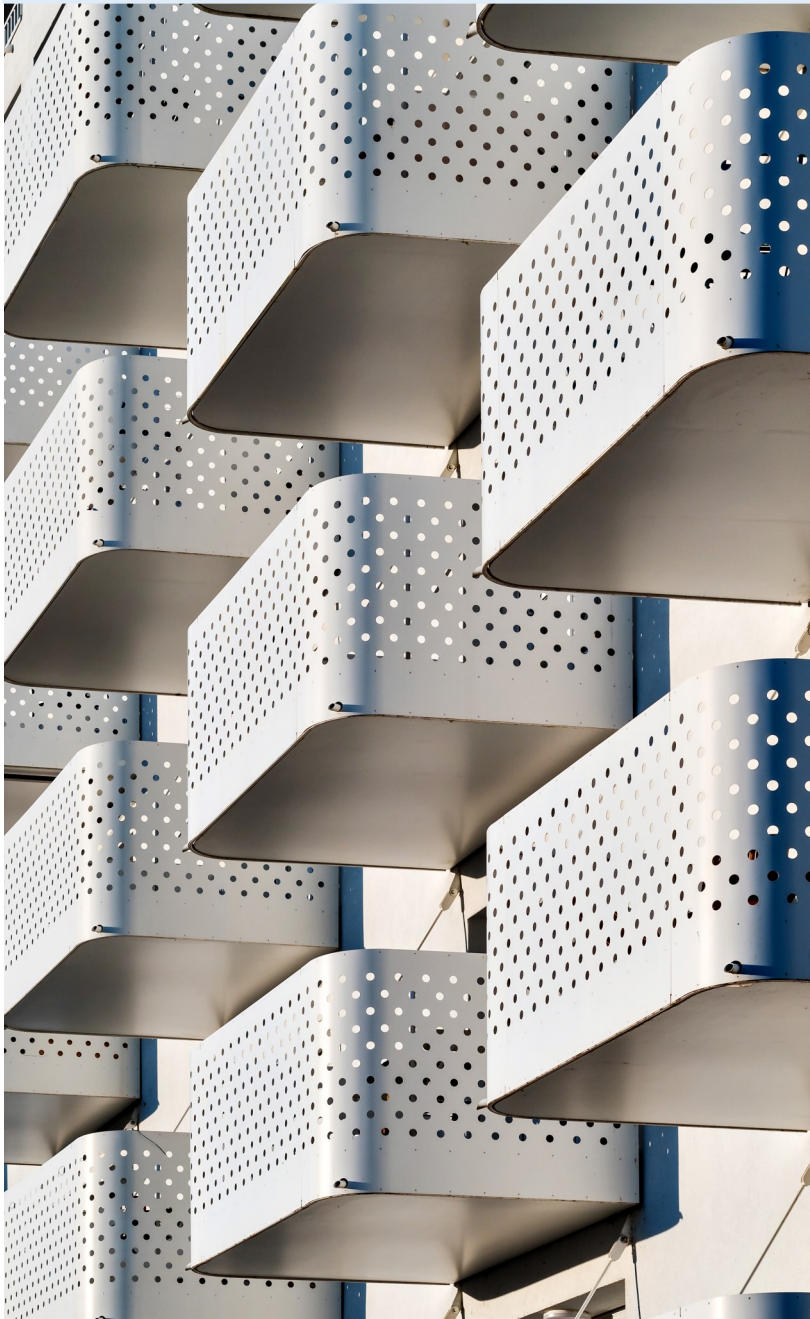


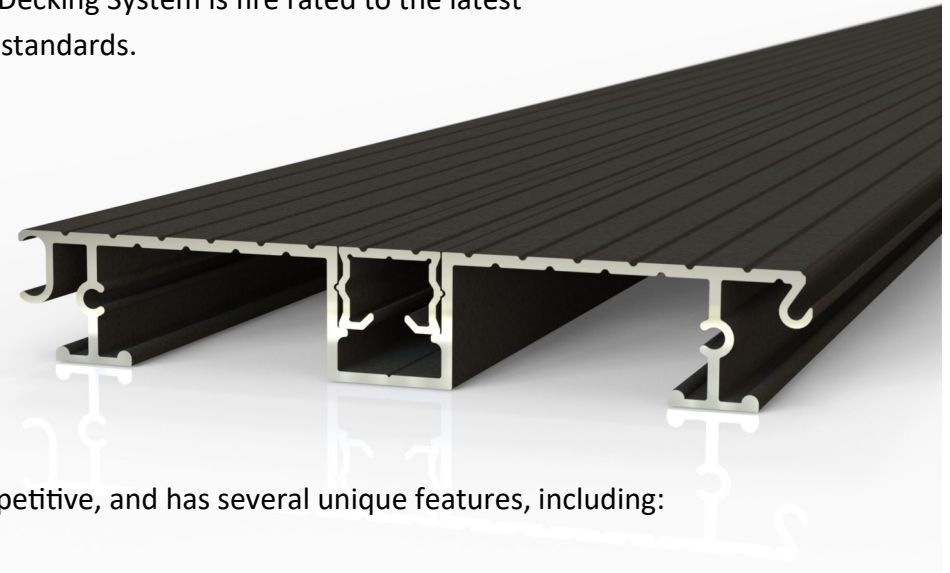
## Balcony Decking System—A2 Fire Rated



# MEXTRU

The home of aluminium systems

Mextru are a leading manufacturer of aluminium decking systems. Our aluminium Balcony Decking System is fire rated to the latest A2-s1,d0 fire safety standards.



It is also highly competitive, and has several unique features, including:

- The best non-slip surface on the market.
- Designed with the installer in mind, Mextru's balcony decking system is the natural choice.
- The Balcony Decking System by Mextru is fully compatible with the Mextru high strength substructure system, which is one the most advanced available on the market.
- The system also offers a complete range of drainage options to form a fully sealed deck, if required.
- Not only is the system fully fire rated, it is also fully compliant with BS 8579
- The system has a design life of more than 30 years.



Recyclable



Fire Rated



Anti slip

# MEXTRU

The home of aluminium systems

## Installation options

The balcony board can be installed in a number of ways to satisfy all balcony configurations.



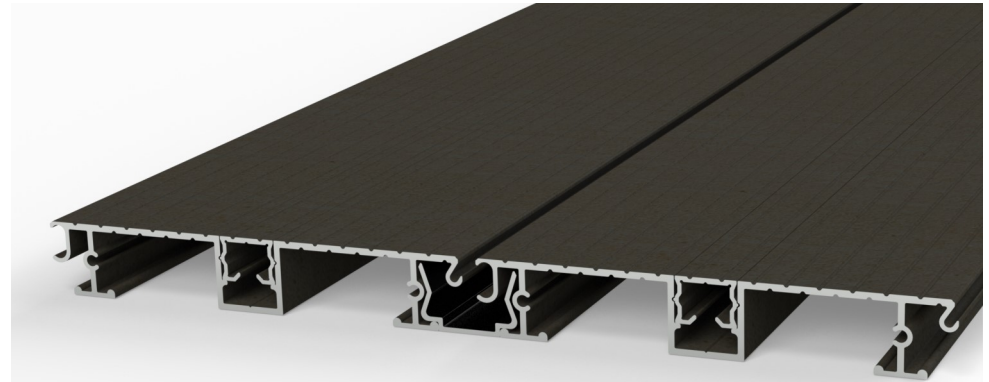
Continuous deck—The balcony board can be installed in a close coupled arrangement (as shown above) to create a continuous deck. There are no gaps between the board. This creates a very contemporary design.



Self draining deck—The balcony board can be installed in a self draining arrangement (as above) to create a self draining deck. There are open 6mm gaps between the boards, which comply with BS 8579. The board is secured with either clips or directly with tek screws, or a combination of both.



Full draining deck—The balcony board can be installed in a self draining arrangement (as above) to create deck with full drainage. This arrangement would be used in conjunction with the Mextru gutter profile. There are 6mm gaps between the boards, which comply with BS 8579. The board is secured with tek screws, hidden under the clip in cover.



## Benefits

- Quick and easy to install
- Clip in cover to hide fixings
- Option to install directly using Tek™ Screws
- Option to install as free draining deck with 6mm board spacing
- Optional drainage system comprising drain channel between the boards and an external gutter system to remove the water
- Choice of 2 standard lengths (3.6m and 6m)
- Fully compatible with the Mextru base structure system



Base rail to facilitate installations on steel balconies

## Effective water management

The Mextru balcony decking system is available with a full water management solution . This includes a drain channel which fits between the boards to carry the water away, and a gutter section that collects the water and is connected to the site drainage.

The drain channel also creates the perfect spacing between the boards to eliminate the need for measurements.

The gutter profile is 30mm high and includes screw ports to enable fixing of end caps to close the section off. The profile can be drilled at any location to provide a convenient connection to the site drainage.

# MEXTRU

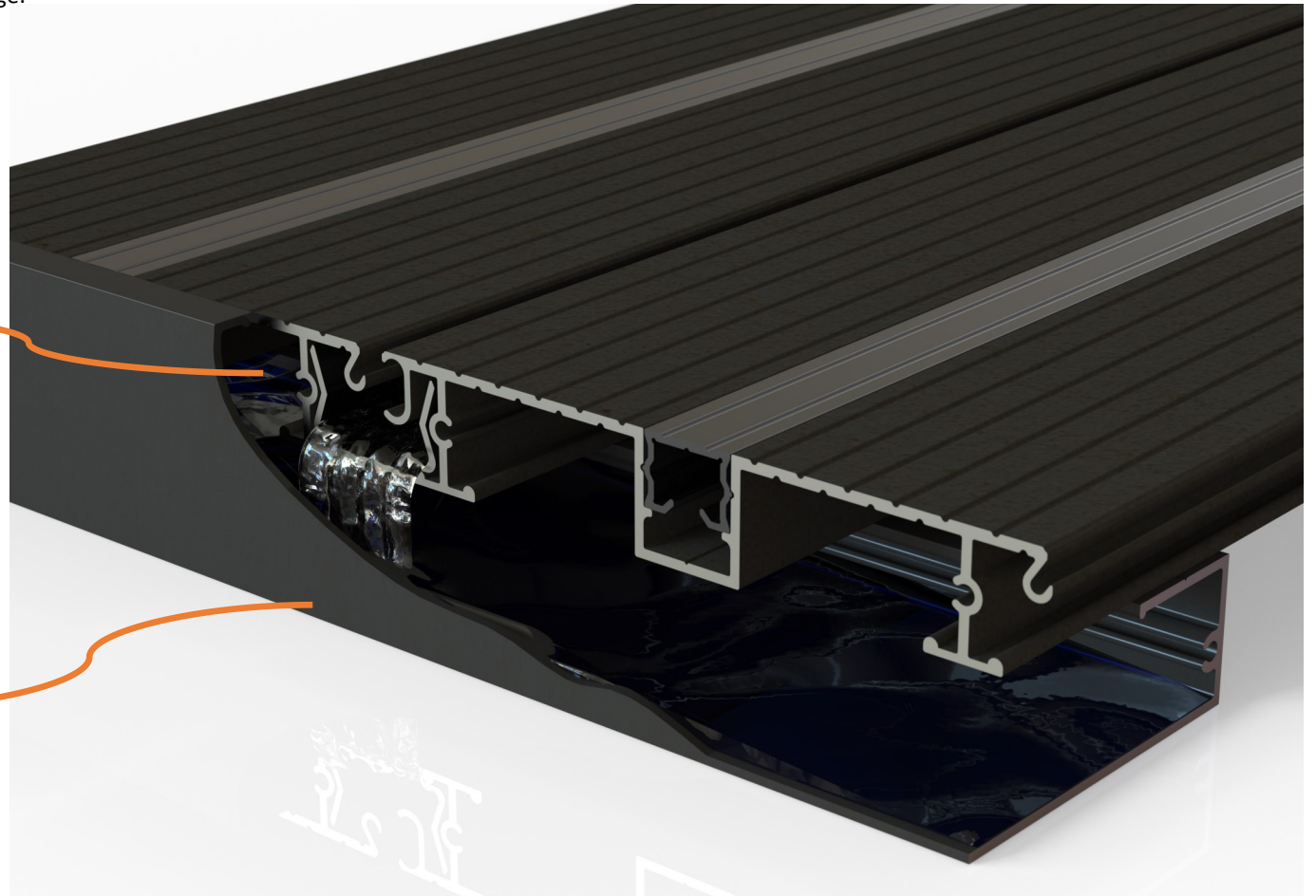
The home of aluminium systems



Drain channel



Gutter profile



## Balcony Decking System—A2 Fire Rated

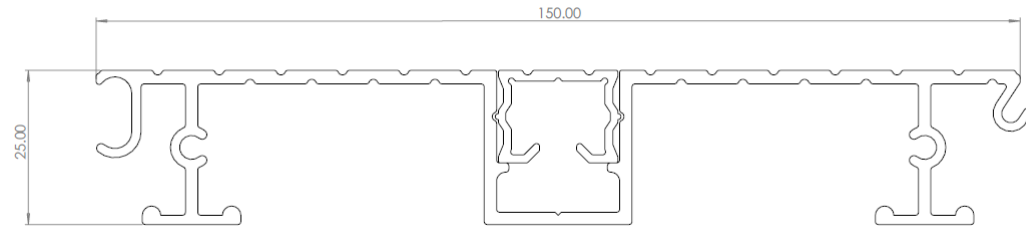


Sales@mextru.com

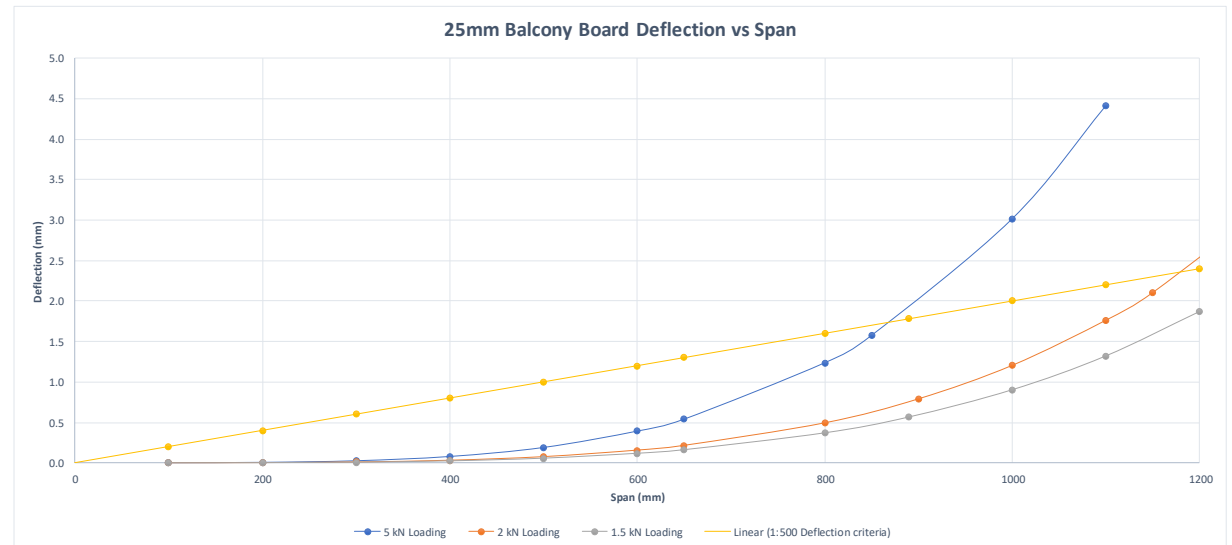
# MEXTRU

The home of aluminium systems

### Technical Data



Weight	11.37 kg/m <sup>2</sup> (Boards only)	
Material	Aluminium 6063 T6	EN755/9
Slip resistance (Dry)	65	BS 7976-2:2002
Slip resistance (Wet)	50	BS 7976-2:2002
Shod ramp performance	29°—R12 (Safe)	DIN 51130:2014
Fire classification	A2-s1,d0	EN 13501-1:2007
Loading deflection (kN / m <sup>2</sup> )		



www.mextru.com

©Mextru Ltd 2022